



Series PLBx

LED Illuminated pushbutton micro-switch



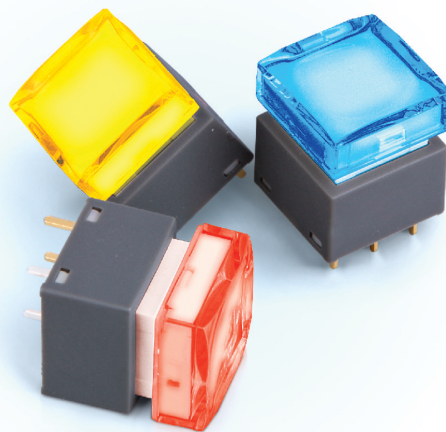
KEY FEATURES

Small size
Momentary and alternate action
RGB color option
Long life cycle
Laser marking service



MAIN APPLICATIONS

Studio equipment.
Audio/Video products,
Broadcast system,
Instrumentation,
Telecommunications ... etc.



GENERAL SPECIFICATIONS

Function: Momentary or Alternate
Contact Rating: Gold, 0.4A Max. @ 28V (AC or DC)
Silver, 0.5A @ 25V DC; 0.2A @ 250V AC
Contact Resistance: 50mΩ silver, 100mΩ gold (initial max)
Insulation Resistance: 100MΩ @ 500V DC
Dielectric Strength: Breakdown is not allowable; 500V AC for 1 minute
Actuation Force: 200 ± 100 gf SPDT
300 ± 150 gf DPDT
Total Travel: 2.2mm ± 0.2mm
Life Expectancy (Mechanical): 1,000,000 cycles
Life Expectancy (Electrical): 200,000 cycles silver
200,000 cycles gold
Operating Temperature: -20° C to 70° C



MATERIALS

Cover: Polycarbonate(PC)
Actuator: Polyoxymethylen(POM)
Base Frame: Polyamide(PA)+GF
Terminal: Brass with gold plating

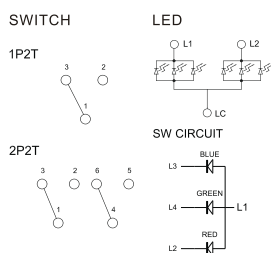


LED SPECIFICATIONS

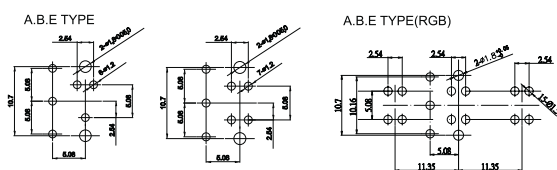
Color	V		Recommended Operating Current	VF	
				Nom	Max
Red	DC 5V	20mA	20mA	1.7V	2.4V
Green	DC 5V	20mA	20mA	1.9V	2.4V
Yellow	DC 5V	20mA	20mA	1.9V	2.4V
Blue	DC 5V	20mA	20mA	3.0V	3.6V
White	DC 5V	20mA	20mA	3.0V	3.6V



CIRCUIT



PCB LAYOUT



HOW TO ORDER

SERIES	OPERATION	POLE	TERMINAL	LED COLOR	LED COLOR	FRAME TYPE	CAP COLOR	DIFFUSER COLOR	CAP SYMBOL
PLBx	N	1	P	R	N	A	T	W	P5
	N=NON-LOCK L=LOCK TYPE	1=1 POLE 2=2 POLE	P=P.C.B TYPE W=WIRE TYPE	B=BLUE G=GREEN R=RED Y=YELLOW F=FULL COLOR N=NONE	B=BLUE G=GREEN R=RED Y=YELLOW F=FULL COLOR N=NONE	A=A TYPE B=B TYPE C=C TYPE D=D TYPE E=E TYPE F=F TYPE	T=TRANSPARENT R=RED G=GREEN B=BLUE Y=YELLOW S=SILVER	W=WHITE R=RED G=GREEN B=BLUE Y=YELLOW	

CAP Symbol: Please refer to cap selection for all available symbols on cap surface, and any customization is welcomed

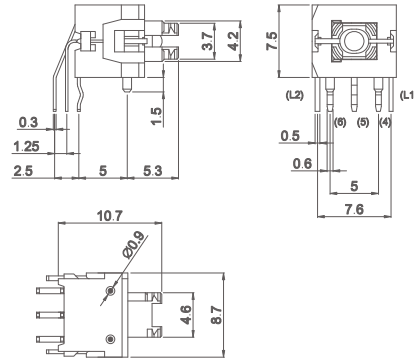
Series PLBx

LED Illuminated pushbutton micro-switch

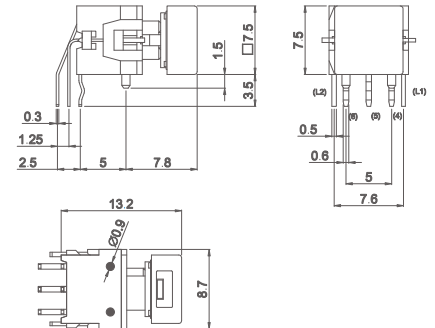


CONFIGURATION EXAMPLES

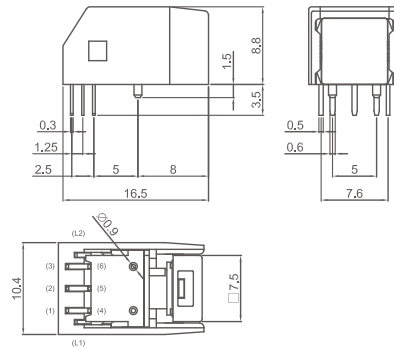
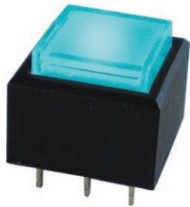
PLBx-N1PRN-ATW



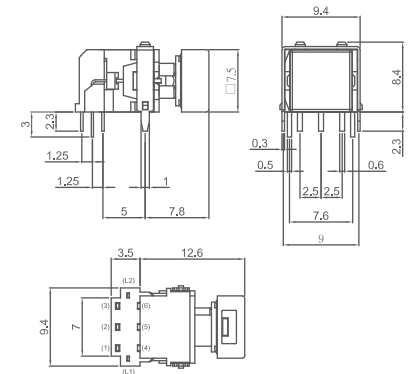
PLBx-N1PGN-ETW



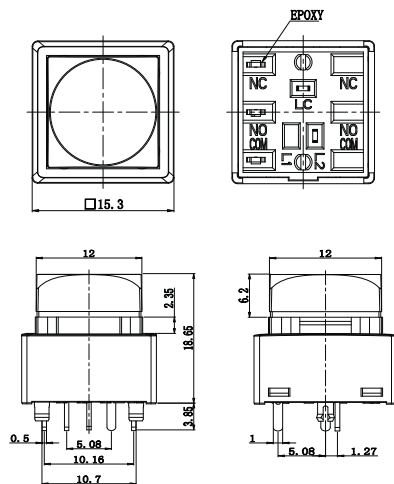
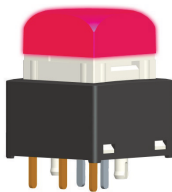
PLBx-N1PBN-BTW



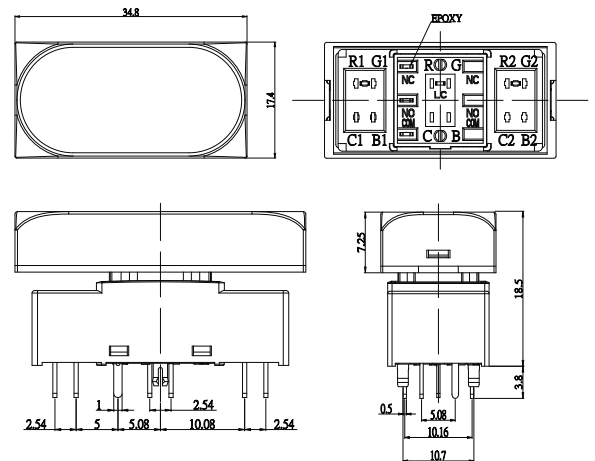
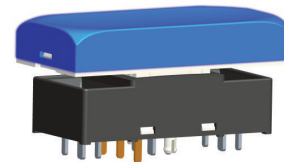
PLBx-N1PNN-ATW-PKT



PLBx-N1PNR-FTW



PLBx-N1PNB-DTW



A	B	C	D	E	F	G	H	I	J	K	L	M	N	O	P	Q	R	S	T
0	1	2	3	4	5	6	7	8	9	10	11	12	13	14	15	16	17	18	19
1	A	B	C	D	E	F	G	H	I	J	CHB	TSK	PIP	SAVE	CUT	TAKE	REC	ENG	PROD
2	K	L	M	N	O	P	Q	R	T	REPLAY	RET1	RET2	KEY ON	AUTO TAKE	D.1	D.2	D.3	D.4	PROD
3	U	V	W	X	Y	Z	ON/OFF	ON	OFF	PP	USE A	USE B	USE C	USE D	USE E	USE F	USE G	USE H	USE I
4	OK	Auto	Enter	Start	STOP	OPEN	CLOSE	Exit	Move	USE J	USE K	USE L	USE M	USE N	USE O	USE P	USE Q	USE R	USE S
5	SET	Reset	Alarm	Menu	Next	Back	Delete	Motor	Save	USE T	USE U	USE V	USE W	USE X	USE Y	USE Z	USE AA	USE AB	USE AC
6	Up	Right	Left	Test	End	Insert	Lock	Print	+/-	USE D	USE E	USE F	USE G	USE H	USE I	USE J	USE K	USE L	USE M
7	ESC	HOME	Health	D-LED 2	OC GENIE	VIDEO INPUT	clr CMOS	Green Power	Save OK	P1	P2	P3	P4	P5	FILE	IN PORT	SOS	TC	TURBO
8	B/R	T/L	F1	F2	F3	F4	F5	F6	F7	SEEK	TRACK	RNA	AS/RPT	Select	ON AIR	ON	OFF	OP	OP
9	F8	F10	F11	F12	F13	F14	IN 1	IN 2	IN 3	TEST	AUTO	STOP	OPEN	MENU	ON AIR	O	M.	J	J
10	IN 4	IN 5	IN 6	IN 7	IN 8	IN 9	IN 10	IN 11	IN 12	IN 13	IN 14	IN 15	IN 16	IN 17	IN 18	IN 19	IN 20	IN 21	IN 22
11	+	-	÷	=	↑	→	↖	↗	↘	↙	MON	ITEM	C/S	GAS	PUMP ON/OFF	PURGE	R/H/R	PARL	IOD
12	↕	✕	↺	↻	↻	↻	↻	↻	↻	FILL	LO RANGE	MID RANGE	MID	HI RANGE	GPD	EFF LEVEL	R/H/R	PARL	IOD