

SECURITY PUSHBUTTON SWITCHES • Ø12MM • NO • LED ILLUMINATED

🏆 DISTINCTIVE FEATURES

compact size

excellent tactile feedback

LED illuminated versions

momentary or latched

NO contact

3A @ 220 V

specific wiring upon request

specific marking upon request



⚡ ELECTRICAL SPECIFICATIONS

Max voltage : 250 V

Max current/voltage with resistive load :
2 A @ 220Vac / 2A @ 24 Vdc

Initial contact resistance : 50 mΩ max

Insulation resistance : 1000 MΩ mini at 500Vdc

Electrical life : 100.000 cycles at full load

Dielectric strength : 1000 VAC, 50Hz, 50 seconds

LED voltage : see *Build your part number* section

LED typical life : 40.000 hours

⚙️ ENVIRONMENTAL SPECIFICATIONS

Operating temperature = from -25°C to +55°C

Ingress Protection to IP65 or IP67 - frontpanel

Compliant with IEC60947-5-1 standard

Compliant with GB14048.5 standard

⚙️ MECHANICAL SPECIFICATIONS

Actuation force : from 2 to 5 Newtons

Travel : from 1.5mm to 2.5mm

Mechanical life : 1.000.000 cycles minimum

Switchbase material : PC

Body material : see *Build your part number* section

Button material : see *Build your part number* section

Lugs material : gold plated copper

Contact material : gold plated silver

≡ GENERAL SPECIFICATIONS

Typical drilling diameter : 12.5mm

Panel thickness : 10mm max.

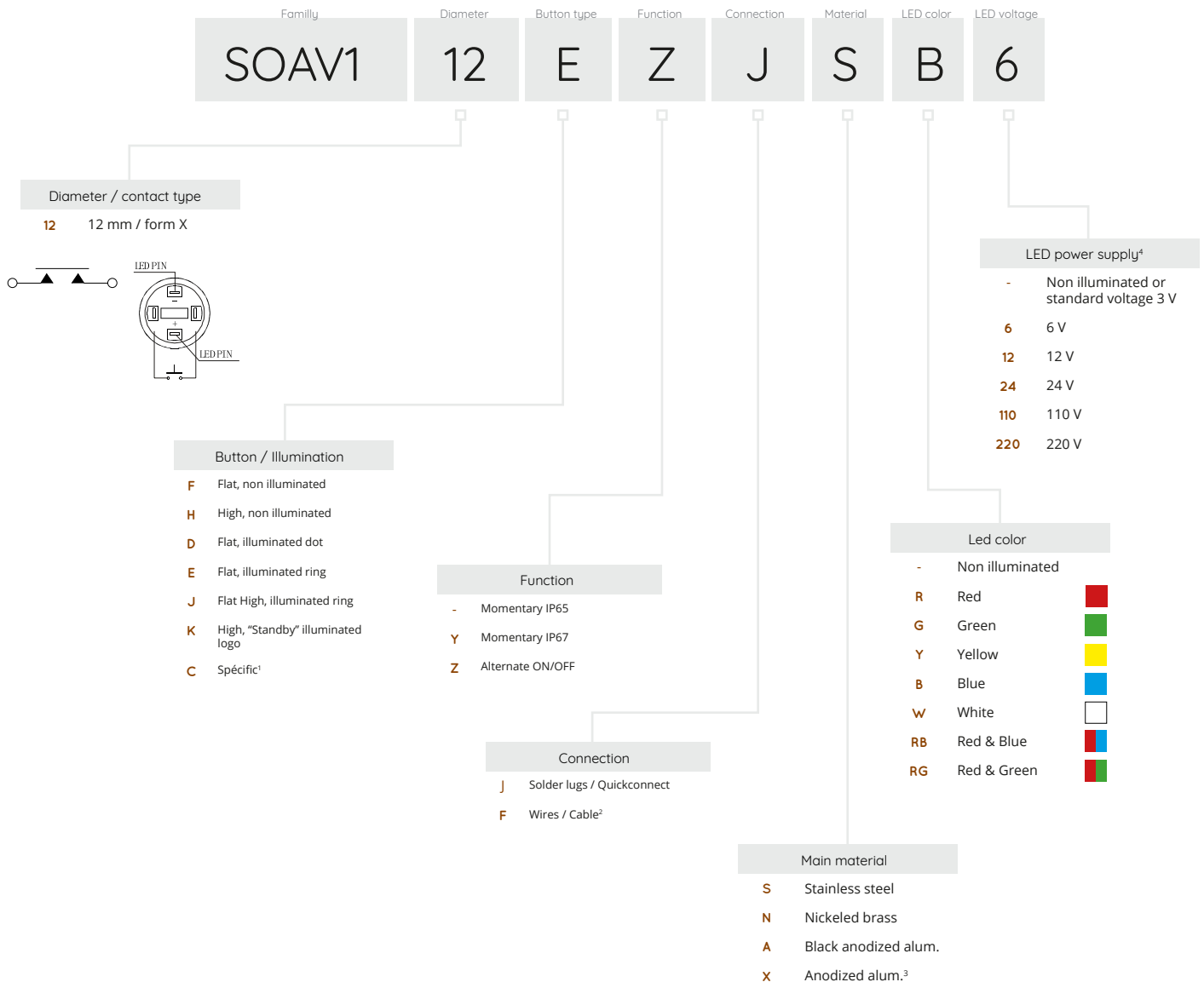
Minimum pitch for matrix installation : 20 x 20 mm

Hand soldering : 300°C max. during 5 seconds

SOAV112 series


SECURITY PUSHBUTTON SWITCHES • Ø12MM • NO • LED ILLUMINATED

BUILD YOUR PART NUMBER



ABOUT THIS SERIES

¹  U.DESIGN service: custom button design upon request, custom marking upon request.

²  U.DESIGN service : custom wiring and harness upon request.

³ Anodized aluminum with custom color upon request and subject to MOQ.

⁴ Standard LED power-supply : 3 V. For options 6, 12, 24, 110 et 220 V an external resistor to be soldered is supplied.

Our pushbutton switches are delivered with their nickel plated brass hex nuts as well as their gasket.

⚠ SOME CONFIGURATIONS MIGHT NOT BE AVAILABLE OR SUBMITTED TO M.O.Q.

FOR ALL YOUR CUSTOM REQUESTS, CONTACT US !
sales@hynoppe.com

SOAV112 series

SECURITY PUSHBUTTON SWITCHES • Ø12MM • NO • LED ILLUMINATED

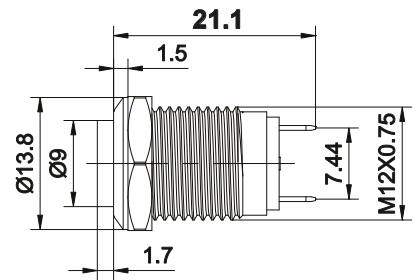
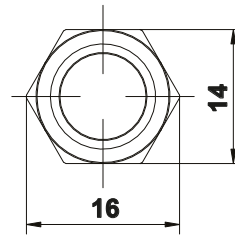
CONFIGURATION EXAMPLES

FLAT BUTTON - NON ILLUMINATED - 1NO



SOAV112FJS

stainless steel, momentary

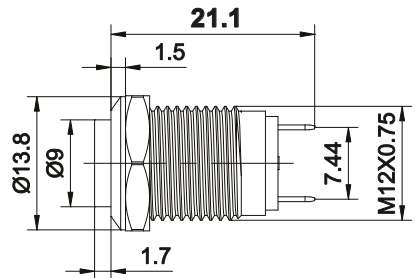
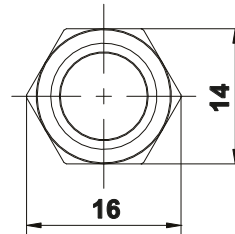


HIGH BUTTON - NON ILLUMINATED - 1NO



SOAV112HJS

stainless steel, momentary



FLAT BUTTON - ILLUMINATED - 1NO

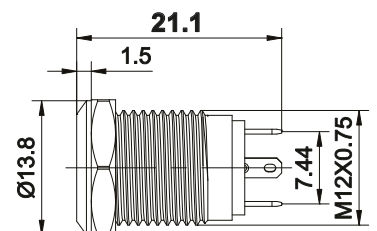
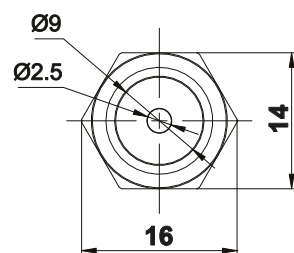


SOAV112DJS••

stainless steel, momentary, illuminated dot

SOAV112EJA••

black alum., momentary, illuminated ring



* please choose LED color and voltage in Build your part number section, when LED is off, ring is without color

SOAV112 series

SECURITY PUSHBUTTON SWITCHES • Ø12MM • NO • LED ILLUMINATED

HIGH BUTTON - ILLUMINATED RING - 1NO



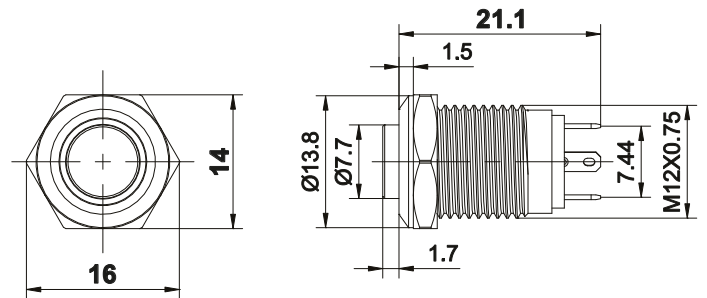
SOAV112JJA••

black alum., momentary, illuminated ring

SOAV112JJS••

stainless steel, momentary - illuminated ring

* please choose LED color and voltage in Build your part number section, when LED is off, ring is without color



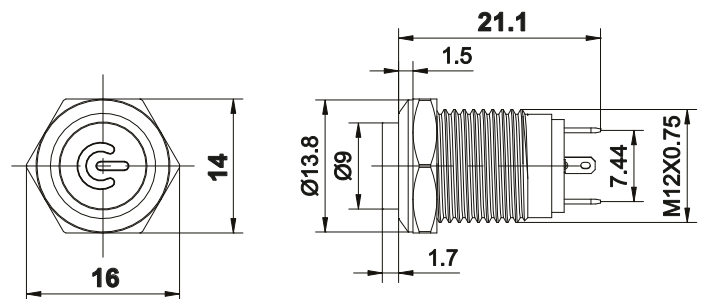
HIGH BUTTON - ILLUMINATED LOGO ⏻ - 1NO



SOAV112KJS••

stainless steel, momentary

* please choose LED color and voltage in Build your part number section, when LED is off, logo is without color



HIGH BUTTON ALTERNATE - ILLUMINATED - 1NO



SOAV112JZJS••

stainless steel, alternate ON/OFF - illuminated ring

* please choose LED color and voltage in Build your part number section, when LED is off, ring is without color

