

FFH Position limit switch



Position limit switch with reduced overall dimensions

The **FFH position limit switch** is used to control several handling systems:

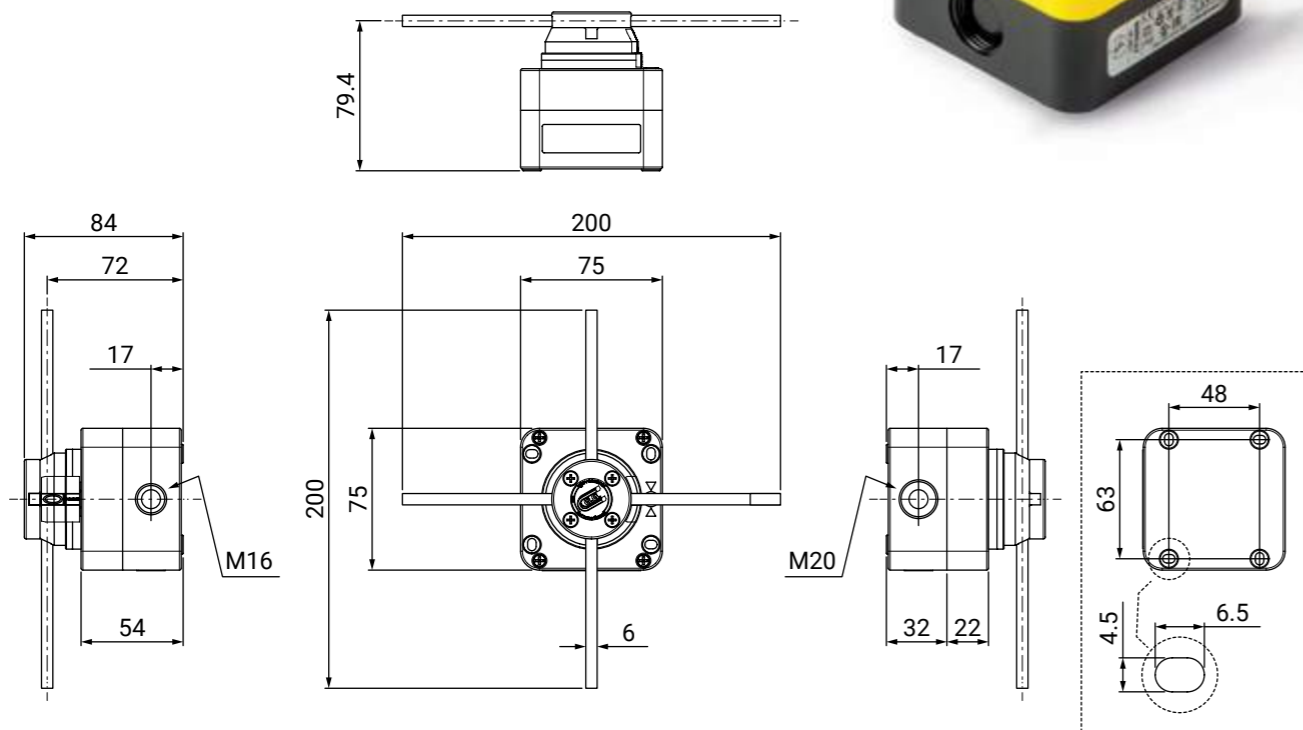
- **Bridge cranes:** the limit switch controls the operating system, for example a PLC, and allows the bridge crane to slow down or stop.
- **Hoists:** the limit switch is used to stop the hoist whenever it reaches a limit position.

Features

- Designed to ensure excellent performances in the most challenging operating conditions.
- Compact design to be adapted in any application need.
- Reduced overall dimensions compared to the historical FCR series.
- Arranged with 4 fixing holes.
- Positive opening NC contacts for safety functions.
- IP65 Protection degree.
- Aluminium rods with 6x6 mm section and enclosure in thermoplastic material.
- Cross rods with 4 maintained positions every 90°.
- Arranged with 2 outputs for cable clamps to reduce installation time and make wiring easier.
- Available different versions, also customizable on request.

Compliance and certifications

- 2014/35/UE - 2011/65/UE - 2015/863/UE
- EN 60947-1 (2007/A1 : 2011/A2 : 2014)
- EN 60947-3 (2009/A1 : 2012/A2 : 2015)
- EN 60204-1 (2006/A1 : 2009)
- EN 60529 (1991/A1 : 2000/A2 : 2013)
- EN 50581 (2012)
- IEC 63000 (2016)



FFH
Internal
cam switch
P016 line



contact open (green square) contact close (red square)

Available codes

	<p>FFH001</p> <ul style="list-style-type: none"> Single speed 3 positions With mechanical interlock 	<p>contacts</p> <table border="1"> <tr> <td>3-4</td> <td>contact open</td> <td>contact close</td> <td>contact close</td> </tr> <tr> <td>1-2</td> <td>contact close</td> <td>contact close</td> <td>contact open</td> </tr> </table> <p>positions: -90° 0 +90°</p>	3-4	contact open	contact close	contact close	1-2	contact close	contact close	contact open																
3-4	contact open	contact close	contact close																							
1-2	contact close	contact close	contact open																							
	<p>FFH002</p> <ul style="list-style-type: none"> Single speed 3 positions With mechanical interlock 	<p>contacts</p> <table border="1"> <tr> <td>7-8</td> <td>contact open</td> <td>contact close</td> <td>contact close</td> </tr> <tr> <td>5-6</td> <td>contact close</td> <td>contact close</td> <td>contact open</td> </tr> <tr> <td>3-4</td> <td>contact open</td> <td>contact close</td> <td>contact close</td> </tr> <tr> <td>1-2</td> <td>contact close</td> <td>contact close</td> <td>contact open</td> </tr> </table> <p>positions: -90° 0 +90°</p>	7-8	contact open	contact close	contact close	5-6	contact close	contact close	contact open	3-4	contact open	contact close	contact close	1-2	contact close	contact close	contact open								
7-8	contact open	contact close	contact close																							
5-6	contact close	contact close	contact open																							
3-4	contact open	contact close	contact close																							
1-2	contact close	contact close	contact open																							
	<p>FFH003</p> <ul style="list-style-type: none"> Single speed 4 positions Without mechanical interlock 	<p>contacts</p> <table border="1"> <tr> <td>3-4</td> <td>contact close</td> <td>contact open</td> <td>contact close</td> <td>contact open</td> </tr> <tr> <td>1-2</td> <td>contact close</td> <td>contact open</td> <td>contact close</td> <td>contact open</td> </tr> </table> <p>positions: 0 90° 180° 270°</p>	3-4	contact close	contact open	contact close	contact open	1-2	contact close	contact open	contact close	contact open														
3-4	contact close	contact open	contact close	contact open																						
1-2	contact close	contact open	contact close	contact open																						
	<p>FFH004</p> <ul style="list-style-type: none"> Single speed 4 positions Without mechanical interlock 	<p>contacts</p> <table border="1"> <tr> <td>5-6</td> <td>contact close</td> <td>contact open</td> <td>contact close</td> <td>contact open</td> </tr> <tr> <td>1-2</td> <td>contact close</td> <td>contact open</td> <td>contact open</td> <td>contact open</td> </tr> </table> <p>positions: 0 90° 180° 270°</p>	5-6	contact close	contact open	contact close	contact open	1-2	contact close	contact open	contact open	contact open														
5-6	contact close	contact open	contact close	contact open																						
1-2	contact close	contact open	contact open	contact open																						
	<p>FFH005</p> <ul style="list-style-type: none"> Single speed 4 positions Without mechanical interlock 	<p>contacts</p> <table border="1"> <tr> <td>5-6</td> <td>contact close</td> <td>contact open</td> <td>contact open</td> <td>contact close</td> </tr> <tr> <td>1-2</td> <td>contact close</td> <td>contact close</td> <td>contact open</td> <td>contact open</td> </tr> </table> <p>positions: 0 90° 180° 270°</p>	5-6	contact close	contact open	contact open	contact close	1-2	contact close	contact close	contact open	contact open														
5-6	contact close	contact open	contact open	contact close																						
1-2	contact close	contact close	contact open	contact open																						
	<p>FFH006</p> <ul style="list-style-type: none"> Double speed 4 positions With mechanical interlock 	<p>contacts</p> <table border="1"> <tr> <td>7-8</td> <td>contact close</td> <td>contact close</td> <td>contact close</td> <td>contact open</td> <td>contact open</td> </tr> <tr> <td>5-6</td> <td>contact close</td> <td>contact close</td> <td>contact open</td> <td>contact close</td> <td>contact open</td> </tr> <tr> <td>3-4</td> <td>contact open</td> <td>contact close</td> <td>contact close</td> <td>contact close</td> <td>contact close</td> </tr> <tr> <td>1-2</td> <td>contact open</td> <td>contact close</td> <td>contact close</td> <td>contact close</td> <td>contact close</td> </tr> </table> <p>positions: -180° -90° 0 +90° +180°</p>	7-8	contact close	contact close	contact close	contact open	contact open	5-6	contact close	contact close	contact open	contact close	contact open	3-4	contact open	contact close	contact close	contact close	contact close	1-2	contact open	contact close	contact close	contact close	contact close
7-8	contact close	contact close	contact close	contact open	contact open																					
5-6	contact close	contact close	contact open	contact close	contact open																					
3-4	contact open	contact close	contact close	contact close	contact close																					
1-2	contact open	contact close	contact close	contact close	contact close																					

POSITION LIMIT SWITCHES