

LOW PROFILE PUSHBUTTON SWITCHES



🏆 DISTINCTIVE FEATURES

extra-low profile

low travel

LED RGB illuminated versions

2A @ 36 Vdc

specific wiring & marking upon request

⚡ ELECTRICAL SPECIFICATIONS

Max voltage : 36 Vdc

Max current/voltage with resistive load :
2 A @ 36Vdc

Initial contact resistance : 50 mΩ max

Insulation resistance : 120 MΩ mini

Electrical life : 200.000 cycles at full load

Dielectric strength : 2000 VAC, 50Hz, 50 seconds

LED voltage : see *Build your part number* section

LED typical life : 40.000 hours

⚙️ ENVIRONMENTAL SPECIFICATIONS

Operating temperature = from -30°C to +55°C

Ingress Protection IP67 - frontpanel

Vibrations resistance : 10 to 55Hz, amplitude 1.2mm p-p

⚙️ MECHANICAL SPECIFICATIONS

Actuation force : 4 Newtons ±1 N

Travel : 0.5mm ±0.1mm

Mechanical life : 1.000.000 cycles minimum

Switchbase material : PA66

Body material : Stainless steel

Button material : Stainless steel

Lugs material : copper tin plating

≡ GENERAL SPECIFICATIONS

Installation diameter : *Build your part number* section

Hand soldering : 260°C max. during 3 seconds




BUILD YOUR PART NUMBER

| Family | Diameter | Button | Connection | Material | Led Color | Power Supply |
|--------|----------|--------|------------|----------|-----------|--------------|
| A | 19 | E | J | S | B | 6 |

DIAMETER / CONTACT TYPE

| | |
|----|--------------------|
| 16 | dia. 16mm / form X |
| 19 | dia. 19mm / form X |
| 22 | dia. 22mm / form X |
| 25 | dia. 25mm / form X |
| 30 | dia. 30mm / form X |




LED POWER SUPPLY

| | |
|----|-----------------|
| - | No Illumination |
| 3 | 3V |
| 6 | 6V |
| 12 | 12V |
| 24 | 24V |

BUTTON TYPE

| | |
|---|---------------------------------|
| F | Flat Button No Illumination |
| H | High Button No Illumination |
| E | Flat Button Illuminated Ring |
| J | High Button Illuminated Ring |
| C | Custom design ¹ |




Illuminated custom design logo - dia. 19mm

MATERIAL

| | |
|---|-------------------------|
| S | Stainless steel (std.) |
| A | Black anodised aluminum |

CONNECTION

| | |
|---|-------------------------|
| J | Solder Terminals |
| C | Connector ² |
| F | Wire leads ³ |

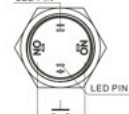


Option C for dia. 19mm

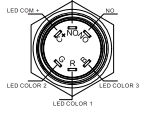
LED COLOR

| | |
|-----|-------------------|
| R | Red |
| G | Green |
| Y | Yellow |
| B | Blue |
| W | White |
| O | Orange |
| RB | Red / Blue |
| RG | Red / Green |
| RGB | Red / Green/ Blue |

ALFA Led 1 color



ALFA Led 2 or 3 colors



À PROPOS DE CETTE SÉRIE

¹ U.DESIGN service: custom button design upon request, custom marking upon request.

² U.DESIGN service: custom wiring and harness upon request.

³ Only available for diameters 19mm, 22mm and 25mm.

⁴ Typical current: 20mA - Resistor is internal. Other voltages available on request.

Our pushbutton switches are delivered with their nickel plated brass hex nuts as well as their gasket.

⚠ SOME CONFIGURATIONS MIGHT NOT BE AVAILABLE OR SUBMITTED TO M.O.Q.

FOR ALL YOUR CUSTOM REQUESTS, CONTACT US !
sales@hynoppe.com

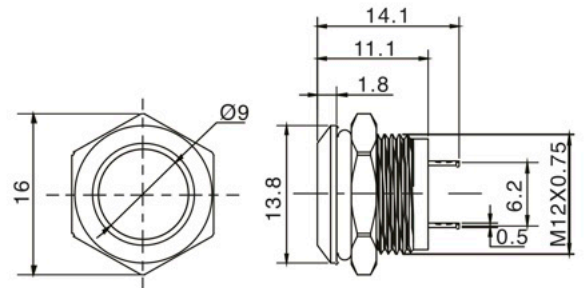
CONFIGURATION EXAMPLES

DIA.12MM - FLAT BUTTON - NON ILLUMINATED



A12FJS

stainless steel, momentary, solder terminals

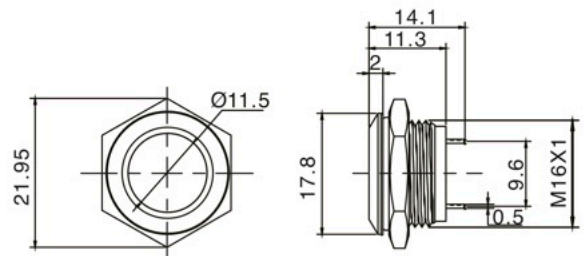


DIA.16MM - FLAT BUTTON - NON ILLUMINATED



A16FJS

stainless steel, momentary, solder terminals

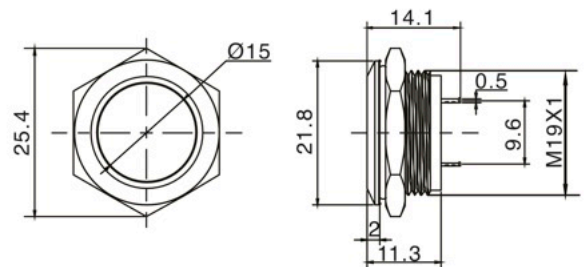


DIA.19MM - FLAT BUTTON - NON ILLUMINATED



A19FJS

stainless steel, momentary, solder terminals

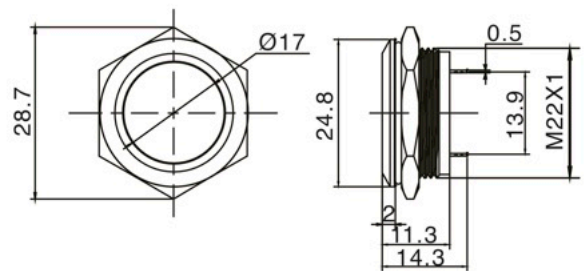


DIA.22MM - FLAT BUTTON - NON ILLUMINATED



A22FJS

stainless steel, momentary, solder terminals

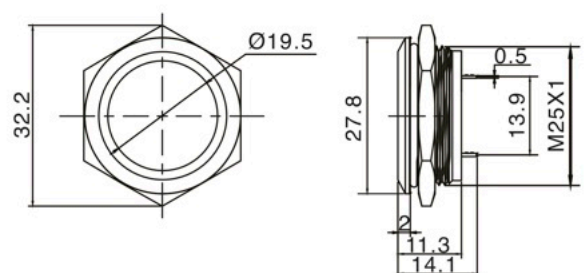


DIA.25MM - FLAT BUTTON - NON ILLUMINATED



A25FJS

stainless steel, momentary, solder terminals



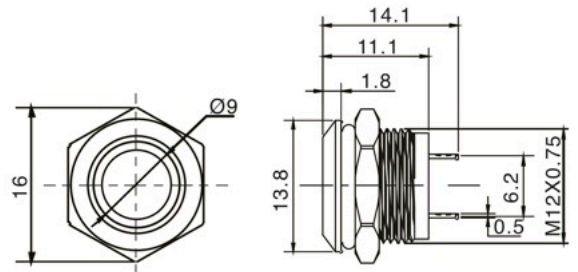
DIA.12MM - FLAT BUTTON - ILLUMINATED



A12EJS••

stainless steel, momentary, solder terminals

* please choose LED color and voltage in Build your part number section,



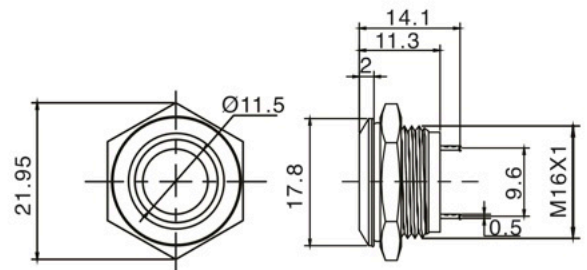
DIA.16MM - FLAT BUTTON - ILLUMINATED



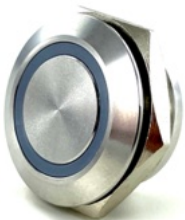
A16EJS••

stainless steel, momentary, solder terminals

* please choose LED color and voltage in Build your part number section,



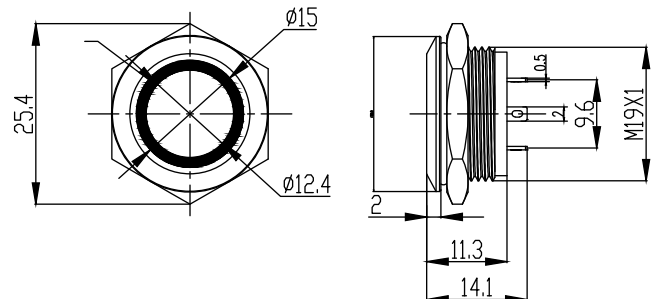
DIA.19MM - FLAT BUTTON - ILLUMINATED



A19EJS••

stainless steel, momentary, solder terminals

* please choose LED color and voltage in Build your part number section,



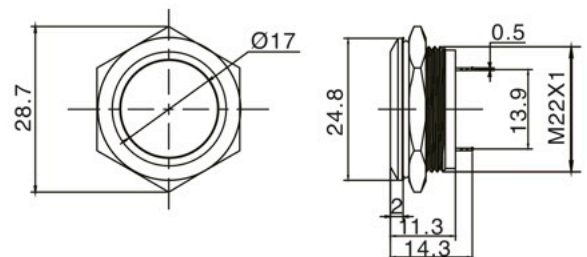
DIA.22MM - FLAT BUTTON - ILLUMINATED



A22EJS••

stainless steel, momentary, solder terminals

* please choose LED color and voltage in Build your part number section,



DIA.30MM - HIGH ROUND BUTTON - ILLUMINATED



A30JJS••

stainless steel, momentary, solder terminals

* please choose LED color and voltage in Build your part number section,

